



Design, Engineering Construction & Project Management

# Corporate Profile



## THE FIRM

L.A STRUCON is an independent organization offering services in the field of civil\structural engineering building and steel construction as well as project management.

The firm is equipped with necessary hardware and software to provide (pre-) feasibility studies, front end engineering design (FEED), as well as detailed engineering and technical services that accompany design phase and aspects.

The firm has well qualified engineers who have considerable expertise in structural engineering and building construction. Through its key personnel L.A STRUCON provides a personal and unbiased service to every individual client and deals with every project, large or small with high degree of engineering quality and efficiency.

The firm is capable of handling a wide variety of projects, including development engineering, conceptual engineering, detailed design, construction and project management.

## OUR PHILOSOPHY

Within the expanding range of engineering, our construction and structural division still enjoys the continuity of growth seen in this past few years. However, as each year passes, these activities become a smaller proportion of the whole as our discipline enjoys similar success in providing the ideas and answers our client require.

The firm believes in practicing engineering in the broadest view. We totally believe in the art of engineering in tandem with figurative analysis and encourage our personnel to take a broad approach and have a healthy understanding of the needs of other disciplines. An understanding of the aims of others will help achieve ideals which produce good relationship between team members.

This greatly assists in helping unite the whole design process and produce a well integrated design and analysis that we all can be proud of.

At L.A STRUCON, we aim to use our ideas, experience and techniques to produce for our clients' total satisfaction of their aims. With all our team colleagues in other disciplines we also strive to enjoy the experience of doing so.

The firm recognizes the importance and enhanced capabilities of computers and other role in engineering. Accordingly, L.A STRUCON has installed and updates extensive in-house computers systems that are in daily use.

**OUR MISION**

Our mission is to provide reliable, innovative and efficient design and engineering construction solution. We aim to continuously deliver superior quality services, on time, within budget and satisfaction of our clients.

We are committed to securing the success of our clients through excellence, integrity and value in all services provided.

**OUR VISION**

Our vision is not only to maintain, but to continuously grow our capacities and competences in order to be the design, construction and project management team of choice for our present and future clients.



## OUR SERVICES

L.A STRUCON provides professional services from feasibility studies to design and construction supervision. The range of services provided includes: -

- ✓ Preliminary Studies
- ✓ Architecture / Interiors
- ✓ Engineering Design
- ✓ Engineering Construction
- ✓ Project Management

### **Preliminary Services: -**

Project planning studies  
Field Development Scheme  
Technical and Economic Feasibility Studies

Architecture / Interiors  
Designs Concept  
Functionality  
Vigor of Art/aesthetics

### **Engineering Design Services: -**

Detailed Engineering Designs and Drawings  
Detailed Material Take-off  
Specification  
Cost Estimations

### **Engineering Construction: -**

Building Construction  
Steel Construction Works  
Civil & Infrastructural construction works

### **Project Management Services: -**

Project Planning and Control  
Cost monitoring and Cost Control  
Progress monitoring and Chasing  
Supervision, Checking and Technical approval of contractors' designs and shop drawings  
Quality Assurance, Works Inspection and Test

Projects cover most aspect of civil and structural engineering including power station, industrial projects, telecommunication mast, general projects and highways together with process engineering for the building material industry.

The above services are tailored to the needs of each client and may extend to control and management of all aspects of a project, or it may be as a sub-consultancy, provision of specialist advice, or a supplement to a client's own organization.

## OUR METHOD

- ❖ Permanent research for cost effective solution.
- ❖ Strict attention to the needs our client.
- ❖ High level of quality assurance.

## OUR PRINCIPLES

- ❖ A reliable and open relationship with our clients.
- ❖ Respect for the contract.
- ❖ Selection of the best-suited experts and managers for each assignment.
- ❖ Timely execution of high-quality work.

### A. STRUCTURAL & CIVIL ENGINEERING DIVISION

#### - Architecture/Structural\_Engineering

Analysis of structures, preparation of designs and concept ideas, drawings, specifications and contract documents for various engineering works. In particular the following:

- a. Residential and mixed use
- b. Multi-storey buildings - residential & commercial
- c. Factories & warehouses
- d. Car parks - over ground & underground
- e. Airport buildings and hangers

#### - Civil Engineering

Project design/construction management services of different civil infrastructural engineering works as follows:

- a. Steel Designs, Fabrication and Installations
- b. Water and earth retaining structures
- c. Roads, Bridges, Culverts, viaducts and other road structures.

## **B. GEOTECHNICAL ENGINEERING**

Design and construction supervision of heavy foundation are carried out for all kinds of structures. The firm has experience on many types of piling and special excavation techniques for large and small foundations.

A geotechnical group with the firm advises on all types of foundation and excavation problems both as service in-house and to client's direct specialist consideration can e given on the interaction between ground foundation and structures under seismic activity.

## **C. CONSTRUCTION DIVISION**

Our construction arm has grown over the years of our existence side by side with our design arm and this has enabled us position ourselves has a one-stop for our ever-increasing clients. We have well positioned our self in the building construction, telecommunication and other industries by providing cost efficient and quality construction services.

## **D. OUR COMPUTER PROGRAMS**

- ✓ Revit Architecture
- ✓ 3DsMax and VRAY
- ✓ STAAD PRO 2007,2008
- ✓ ORION Ver. 14, 15.1, 16 & 18 (BIM)
- ✓ TEDDS
- ✓ R.C.D
- ✓ PROKON
- ✓ AUTODESK BUILDING DESIGN SUITE (BIM)
- ✓ TEKLA STRUCTURAL DESIGNER 2015 (BIM)

## **E. LIST OF OUR CONSTRUCTION EQUIPMENTS**

- ✓ Concrete Mixer                    2nos
- ✓ Poker Vibrator                    1nos
- ✓ Moulding Machine                1nos
- ✓ Compression Machine            1nos
- ✓ Bending Machine                 1nos



**LIST OF KEY PROJECTS**





## LIST OF MAJOR PROJECTS UNDERTAKEN

L.A STRUCON has handled some notable projects, including conceptual engineering, detailed design, construction and project management. The experience at all stages of the design, supervision and construction process guarantees the benefit of efficient and practical engineering solutions to suit all requirements.

In L.A STRUCON, we supervise projects on a culture of excellence, created and sustained through experiment over the years. Our record on construction business has seen us through supervising all types of new development be it residential, commercial and institutional.

L.A STRUCON guarantees the quality of input into all projects undertaken. The range of technical and management skill made available provides projects with a genuinely multi-disciplinary approach. Listed below are some of projects undertaken by us: -

### CONSULTANCY PROJECTS UNDERTAKEN

S/NO.	PROJECTS	LOCATION	CLIENTS	ROLE	STATUS
1.	Proposed 3 storey office development & showroom	Awolowo way, Ikeja, Lagos	Shola & shola Associates/PTV Ltd	Structural Engineers	Construction completed
2.	Proposed residential Development	Lekki, lagos	Design and Structures Ltd	Structural Engineers	Construction completed
3.	Flourishgate Estate development	Lekki, lagos	Florishgate properties Ltd	Architecture	Design Completed
4.	Proposed 2 storey residential Development	Festac town, lagos	Design and structures Ltd	Structural Engineers	Construction in progress
5.	Kelsey Greene Hotel	Oregun, lagos	Kelsey Greene	Structural Engineers	Design/Construction Completed
6.	Proposed security post Mobile kiosk	lagos	LSTEF (lagos state security trust fund)	Architect Structural Engineers	Construction Design Completed
7.	Proposed Office Renovation	Otunba adedoyin Lekki Phase 1	Mid-Western oil & Gas Ltd	Architects Structural Engineers	Design/construction Completed
8.	Proposed residential development of block of 6 flats	Lekki , lagos	Mr Ayobami Ibrahim	Structural Engineers	Design Completed
9.	Proposed 3 storey commercial Development	Ikeja, lagos	Hazon space Ltd/Elemax Electronics	Structural Engineers	Design Completed

**CORPORATE PROFILE**

S/NO.	PROJECTS	LOCATION	CLIENTS	ROLE	STATUS
10	Filling/packing MACLEANS Production line.	Ajao Estate, Lagos	GLAXO-SMITHKLINE AGBARA	Contractor/ civil Engineers	Construction/ Design Completed
11	Proposed 4 storey Mixed Use Development	129,Ogunlana Drive, Surulere, Lagos	Sterkem Nigeria Enterprises/Redeem Christian Church of God, Grace Chapel	Architects	Design Completed
12	Proposed Hotel Development	Custom Office, Farm center, Minna, Niger State.	JD&G Concepts/ Brighter Suites Limited	Architects	Design Completed
13	Proposed Industrial Development	24, Olorunsogo Street, Mushin Lagos	Ifia Nigeria Limited	Civil/Structural Engineers	Design in progress
14	Proposed 10,000 capacity auditorium	Lekki-Epe Expressway, Lagos.	Christ Embassy BELIVERS LOVEWORLD	Architects Structural Consultant	Construction/ Design Completed
15	Structural Retrofit for Christ Apostolic Mission Church	112, Agege Motor road, Mushin, Lagos.	Christ Apostolic Mission Church	Architects Structural Engineers	Design/Constructi on Completed
16	Proposed 2 Storey Institutional Development	Alabi Oyo Street, Ejigbo, Lagos.	Garland Private School	Project Managers	Construction Completed
17	Proposed 4 Storey Residential Development	Bolaji Banwo Street, Aguda, Surulere.	Jelouultimate Nigeria Limited	Structural Engineers	Construction in progress
18	Proposed factory complex Renovation Development	Awolowo way, Ikeja, Lagos.	Lagos State Printing Corporation (LSPC)	Architects Structural Engineers	Construction Design Completed
19	Proposed Residential Development (Estate)	Ibadan, Oyo State.	Litedares Consult Limited	Structural Engineers	Design Completed
20	Proposed Estate Development	Ibadan, Oyo State.	Litedares Consult Limited/Bricklinks Africa	Civil/Structural Engineers	Company in progress
21	Proposed Structural Steel Development	Ikeja and Victoria Island, Lagos.	Lafarge ReadyMix Limited.	Structural Engineers	Design Completed
22	Proposed Residential Development - 2 Storey	Lekki, Lagos	Holistic Facades Limited/Turris Fortissima Limited	Structural Consultants	Construction in progress
23	Structural Assessment and Audit for Existing Residential Building	Ikota, Lekki	Holistic Facades Limited	Structural Consultants	Assessment Completed

S/NO.	PROJECTS	LOCATION	CLIENTS	ROLE	STATUS
24	Proposed 4 storey Residential Development	Lekki second toll-gate,Lagos	Dezyns & Structures Limited	Architects Structural Consultants	Design in progress
25	Proposed Residential Terrace Development	Magodo GRA, Lagos	Lanark Visualization Limited	Structural Consultants/ project manager	Design Completed/Const ruction in progress
26	Proposed 5 storey Hotel Development	Alagbaka, Akure, Ondo State.	Holistic Facades Limited	Structural Consultants	Design Completed/Const ruction in progress
27	Proposed Lecture Theatre	Mountain Top University, Magboro, Ogun State	Holistic Facades Limited	Architects Structural Engineers	Design Completed/Const ruction in progress
28	Proposed 2 Twin storey Residential Development	Lekki Phase 1, Lagos..	Lanark Visualization Limited	Structural Consultant	Design Completed/Const ruction Completed
29	Proposed Office and Warehouse development	Lekki-Epe Expressway, Ibeju-lekki, lagos	Chibek Instruments Limited	Structural Engineers/ Project Managers	Design Completed
30	Proposed Warehouse	Lekki-Epe Expressway, Ibeju-lekki, lagos.	AutoNation Limited	Structural Consultants	Design Completed
31	Proposed Terrace Development	Cadastral, Guzape, Abuja	Lanark Visualization Limited	Architect Structural Engineers	Design Completed
32	Proposed Terrace Development	Plot 2662, Zone B08, Jahi, Abuja.	Aero Consult Linted/Lanark Visualzation limited	Structural Engineers	Design Completed
33	Proposed Residential Development	Plot J-79, Close 10 Road 03 VGC, Lagos	Lanark Visualization Limited	Architects Structural Engineers	Design Completed
34	Proposed Institutional Development	Ilasal Village, Lekki, Lagos	Lanark Visualization Limited	Structural Engineers	Design Completed
35	Proposed Residential Development	Nduru Isiekensi South LGA, Imo State.	Lanark Visualization Limited	Structural Engineers	Design Completed

**PICTURES OF SOME OF THE STRUCTURAL CONSULTANCY PROJECTS EXECUTED BY L.A STRUCON.**



**PROJECT NAME: - Proposed 5 Storey Residential Development**

**LOCATION: - Alagbaka, Akure, Ondo State.**

**CLIENT REP: - Holistic Facades Limited**

**ROLE: - Structural Consultants**

**PROJECT COST ESTIMATE: - #400million**

**PROJECT STATUS: - 90% completed**



**PROJECT NAME: - Proposed 5 Storey Hotel Development**

**LOCATION: - Alagbaka, Akure, Ondo State.**

**CLIENT REP: - Holistic Facades Limited**

**ROLE: - Structural Consultants**

**PROJECT COST ESTIMATE: - #700million**

**PROJECT STATUS: - 70% completed**



**PROJECT NAME:** - Proposed Office Development  
**LOCATION:** - 28, Association Avenue, Ilupeju, Lagos.  
**CLIENT REP:** - Holistic Facades Limited  
**ROLE:** - Structural Consultants  
**PROJECT COST:** - #150million  
**PROJECT STATUS:** - 85% completed



**PROJECT NAME:** - Proposed 4 Storey Residential Development

**LOCATION:** - 8, Kadiri Street, Fadayi, Lagos.

**CLIENT REP:** - Leoramon Engineering & Construction Limited

**ROLE:** - Structural Consultants

**PROJECT COST:** - #100million

**PROJECT STATUS:** - On-going



**PROJECT NAME: - Proposed 4Nos Terrace Development**

**LOCATION: - Magodo Phase II, Lagos.**

**CLIENT REP: - Holistic Facades Limited**

**ROLE: -Architects/ Structural Consultants**

**PROJECT COST: - #70million**

**PROJECT STATUS: - 75% completed**





**PROJECT NAME: - Proposed Residential Development**

**LOCATION: - Lekki Phase I, Lagos State.**

**CLIENT REP: - Lanark Visualisation Limited**

**ROLE: - Architect Consultants**

**PROJECT COST: - #55million each**

**PROJECT STATUS: - 90% completed**



**PROJECT NAME:** - Proposed Lecture Theatre Development  
**LOCATION:** - Mountain Top University, Magboro, Ogun State.  
**CLIENT:** - Mountain Top University  
**ROLE:** - Structural Consultants  
**PROJECT COST:** - #100million  
**PROJECT STATUS:** - 75% completed



**PROJECT NAME:** - Proposed Semi-detached Duplex Development  
**LOCATION:** - Plot 36, Adewole Kuku Street, Lekki Phase I, Lagos State.  
**CLIENT:** - Mr & Mrs Olaniyi Palmer  
**ROLE:** - Structural Supervision & Project Manager  
**PROJECT COST:** - #80million  
**PROJECT STATUS:** - 65% completed

**BUILDING/INFRASTRUCTURAL PROJECTS UNDERTAKEN**

S/NO.	PROJECTS	LOCATION	CLIENT	ROLE	STATUS
1.	Optical fibre cable implementation	Owerri, Imo State.	Bell-X/MTN	Contractor	Construction completed
2.	Optical fibre cable implementation	Lagos State	Bell-X/MTN	Contractor	Construction completed
3.	Installation of 11kv HT overhead line	Iba, Lagos State	Bell-X/MTN	Contractor	Construction completed
4.	50m Drainage Construction for Multivegas Limited	Bogije, Lekki, Lagos	Techno Oil Limited/Multivegas Limited	Contractor	Construction ongoing
5.	400m Drainage Construction for Folbert Properties Limited	Behind National Stadium, Surulere, Lagos.	Folbert Properties Limited	Contractor	Construction ongoing
6.	200m Drainage Construction for Field Explorer Limited	Ishefun Road, Abule-egba, Lagos	Field Explorer\Lagos State Government	Contractor	Construction ongoing
7.	Steel Cladding construction works	Victoria Island, Lagos State	Lafarge Readymix Limited	Contractor	Construction in progress
8.	Piling Construction works	Ikate, Lekki, Lagos State	Private Client	Contractor	Construction completed
9.	Building construction works	Acacia Groove Estate, Wuye, Abuja	Folbert Properties Limited	Contractor	Construction completed
10.	Site Clearing Works	Lagos/Ibadan Expressway	Christ Embassy/Pb Designs Limited	Contractor	Clearing completed
11.	Proposed Office and Warehouse Development	Bogije, Lekki, Lagos	Techno oil Limited/Multivegas Nigeria Limited	Design & Construction	Construction completed
12.	Proposed Warehouse Development	Ibeju-Lekki, Lagos	Dangote Refinery/Leoramom Eng & Constr. Limited	Design & Construction	Construction completed
13.	Proposed Warehouse Development	Ijesha-tedo, Apapa, Lagos	Field Explorer Limited	Construction	Construction completed

**Pictures of Drainage Construction Works Carried Out by L.A STRUCON.**



**PROJECT NAME: - 400m Drainage Construction works**  
**LOCATION: - Behind National Stadium, Surulere, Lagos.**  
**CLIENT REP: - Folbert Properties Limited**  
**ROLE: - Construction**  
**PROJECT COST: - #12million**  
**PROJECT STATUS: - 70% completed**



**PROJECT NAME: - 200m Drainage Construction works**

**LOCATION: - Ishefun Road, Abule-egba, Lagos.**

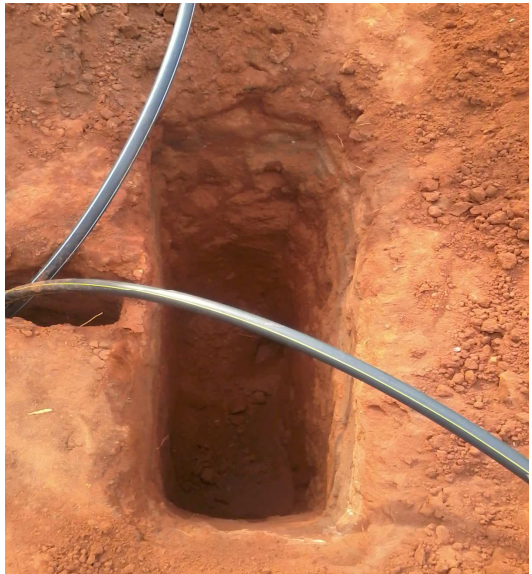
**CLIENT REP: - Field Explorer Limited**

**ROLE: - Construction**

**PROJECT COST: - #12million**

**PROJECT STATUS: - 70% completed**

**PICTURES OF INFASTRUCTURAL WORKS CARRIED OUT BY L.A STRUCON.**



**PROJECT NAME: - Optical Fibre Cable Installation**

**LOCATION: - Awka, Anambra State.**

**CLIENT REP: - Bell-X\MTN**

**ROLE: - Construction**

**PROJECT COST: - #10million**

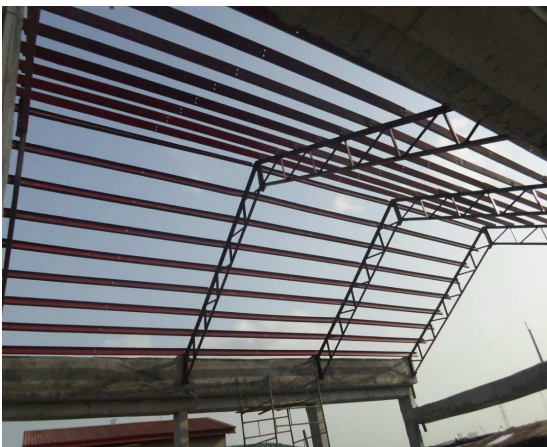
**PROJECT STATUS: - 100% completed**

PICTURES OF BUILDING CONSTRUCTION WORKS CARRIED OUT BY L.A STRUCON





PRAYER PAVALION FOR RCCG THRONE OF GRACE (TOG).





**PROJECT NAME: - RCCG Throne of Grace Prayer Pavillion**

**LOCATION: - Ebute-metta, Lagos**

**CLIENT REP: - RCCG**

**ROLE: - Construction**

**PROJECT COST: - #35million**

**PROJECT STATUS: - 100% completed**

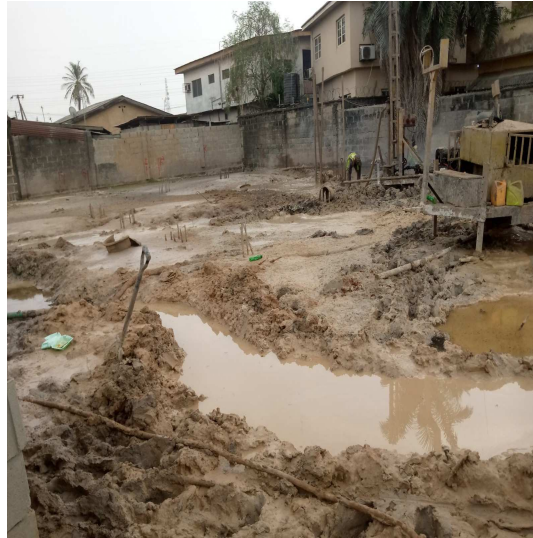
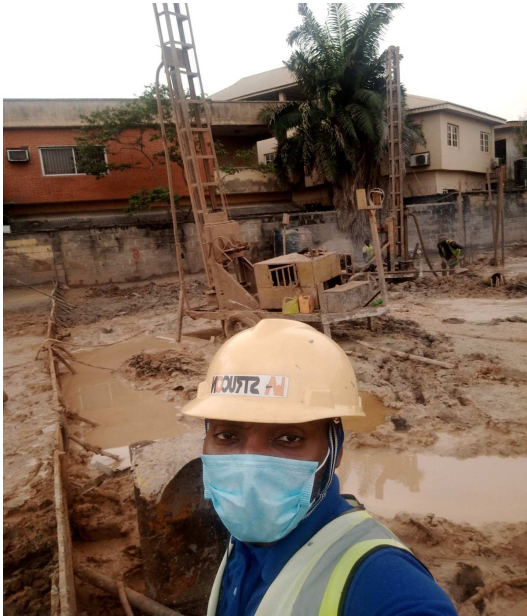
PROPOSED COMMERCIAL DEVELOPMENT FOR CHIBEK INSTRUMENTS LIMITED



STRUCTURAL SUPERVISION AND PROJECT MANAGEMENT CARRIED OUT BY L.A STRUCON



**FOUNDATION PILING PROJECT EXECUTED BY L.A STRUCON**



**PROJECT NAME: - PROPOSED CEDARS COURT**

**LOCATION: - Surulere, Lagos**

**CLIENT REP: - Folbert Properties Limited**

**ROLE: - Piling Construction**

**PROJECT COST: - #15million**

**PROJECT STATUS: - 100% completed**



**PROJECT NAME: - PROPOSED RESIDENTIAL DEVELOPMENT**

**LOCATION: - Ago Palace way, Isolo, Lagos**

**CLIENT REP: - Lanark Visualization Limited**

**ROLE: - Piling Construction**

**PROJECT COST: - #13.5million**

**PROJECT STATUS: - 100% completed**



**PROJECT NAME: - PROPOSED RESIDENTIAL DEVELOPMENT**

**LOCATION: - Ikate, Lekki, Lagos**

**CLIENT REP: - Lanark Visualization Limited**

**ROLE: - Piling Construction**

**PROJECT COST: - #18.5million**

**PROJECT STATUS: - 100% completed**

PICTURES OF STEEL FABRICATION AND ERECTION WORKS AT BOGIJE, LEKKI, LAGOS



Plate 1:- Ongoing Fabrication & Assembling.



Plate 2:- Completed Steel Rafter beams.



Plate 3: Ongoing Erection works and connection of steel rafter beams.





PLATE 4:- PICTURE SHOWING ERECTED STEEL FRAME



PLATE 5: ONGOING BLOCKSETTING AT OFFICE AREA



PLATE 6: PLASTERING WORKS ON BLOCKSETTING



PLATE 7: PICTURE SHOWING INTERNAL STEEL FRAME OF WAREHOUSE AREA



PLATE 8: PICTURE SHOWING COMPLETED & PLASTERED BLOCKWALL OFFICE AND WAREHOUSE FRAME

**PROJECT NAME:** - Proposed Office and Warehouse Development

**LOCATION:** - Bogije, Lekki, Lagos

**CLIENT REP:** - Multivegas Nigeria Limited

**ROLE:** - Design & Construction

**PROJECT COST:** - #150million

**PROJECT STATUS:** - 100% completed

PICTURES OF STEEL FABRICATION AND ERECTION WORKS AT DANGOTE REFINERY, IBEJU-LEKKI, LAGOS



PLATE 1: FABRICATION WORKS ON STEEL RAFTER BEAM



PLATE 2:- STEEL RAFTER BEAM READY FOR LIFTING

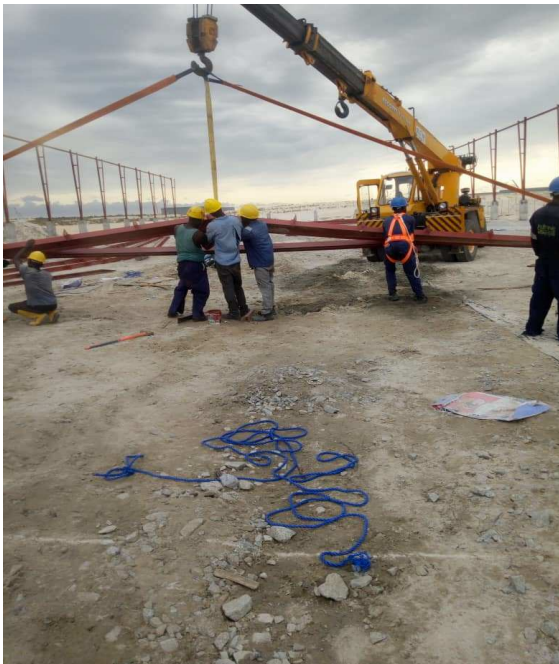


PLATE 3: ERECTION PROCESS OF STEEL RAFTER BEAM



PLATE 4: CONNECTION OF STEEL RAFTER TO STEEL ANCHORION



PLATE 5: ERECTED STEEL FRAME WITH ONGOING END CONNECTIONS



PLATE 6: COMPLETED STEEL PORTAL FRAME

**PROJECT NAME: - Proposed Warehouse Development**

**LOCATION: - Ibeju-lekki, Lagos**

**CLIENT REP: - Leoramom Engineering & Construction Limited**

**ROLE: - Design & Construction**

**PROJECT COST: - #80million**

**PROJECT STATUS: - 100% completed**

PICTURES OF STEEL FABRICATION AND ERECTION WORKS AT IJESHA-TEDO, APAPA, LAGOS.



PLATE 1: ONGOING TRUSS FABRICATION WORKS



PLATE 2: COMPLETED STEEL PORTAL FRAME AWAITING ROOFING

**PROJECT NAME:** - Proposed Warehouse Development  
**LOCATION:** - Ijesha-tedo, Apapa, Lagos  
**CLIENT REP:** - Leoramom Engineering & Construction Limited  
**ROLE:** - Construction  
**PROJECT COST:** - #60million  
**PROJECT STATUS:** - 100% completed



**LIST OF OUR CLIENTS**



**L.A STRUCON** is honored to have been associated with a range of clients on various projects, as listed below.

- LAGOS STATE SECURITY TRUST FUND
- LAGOS STATE PRINTING CORPORATION
- A-HOME CONSTRUCTION LIMITED
- GLAXO SMITHKLINE
- MEGAMOUND INVESTMENTS
- BELIVERS LOVEWORLD
- CHIBEK INSTRUMENT LIMITED
- KELSEY GREENE LTD
- DEZYNS AND STRUCTURES LIMITED
- FIELD EXPLORER LIMITED
- FOLBERT PROPERTIES LIMITED
- PRETOXNG TELECOM
- MIDWESTERN OIL & GAS LTD
- HOLISTIC FACADES LIMITED
- JD&G CONCEPTS
- KUNECH PROPERTIES LIMITED
- MULTIVEGAS NIGERIA LIMITED
- LANARK VISUALISATION LIMITED
- LEORAMON ENGINEERING & CONSTRUCTION LIMITED
- LITEDARES CONSULT LIMITED
- LAFARGE READYMIX LIMITED
- PLARC CONSULTANTS
- RIGHTCLICK ASSOCIATES
- SOUTHGATE GLOBAL SERVICES

**CURRICULUM VITAE OF  
KEY PERSONNEL**



**CURRICULUM VITAE**

**NAME:** PHILLIPS, Emmanuel Olusegun  
**PROFESSION:** Civil/Structural Engineer  
**NATIONALITY:** Nigerian  
**POSITION:** Partner, **L.A STRUCON**  
**KEY DATA:** Engr. Phillips is responsible for the final vetting of all engineering works executed in L.A STRUCON. He is a well seasoned engineer with vast wealth of experience in structural design and supervision of numerous residential, commercial, industrial, institutional and road engineering projects. He has been in this profession for over 30 years and has brought this wealth of experience into L.A STRUCON.

**EDUCATIONAL**

**QUALIFICATION:** B.Eng (Hons) Civil Engineering  
Purdue University, Indiana, USA

**PROFESSIONAL**

**AFFILIATION:** Member, Nigerian Society of Engineers (MNSE)  
Member, Council of Registered Engineers of Nigeria (COREN)

**EXPERIENCE RECORD:** Engr. Phillips started his career with the ministry of works, upon his arrival from the states. There he was involved in the construction and supervision of several governmental projects. He later joined Chevron Plc as a project engineer and he was involved in several projects for the firm such as jetty construction, building and road construction.

<b>Languages:</b>	<b>Spoken:</b>	<b>Written:</b>	<b>Reading:</b>
English	Excellent	Excellent	Excellent
Yoruba	Excellent	Excellent	Excellent

**CURRICULUM VITAE**

**NAME:** OLANIYAN, Olalekan Oluwaseun  
**PROFESSION:** Civil/Structural Engineer  
**NATIONALITY:** Nigerian  
**POSITION:** Managing Partner, **L.A STRUCON**  
**KEY DATA:** Olalekan Olaniyan is a Partner with L.A STRUCON. He has been involved in the Structural Design and Supervision of a number of Projects such as numerous Residential, Commercial and Industrial engineering projects in both reinforced concrete and Structural Steelwork.

**EDUCATIONAL**

**QUALIFICATION:** B.Eng (Hons) Civil Engineering  
 Federal University of Technology, Minna, Niger State.

**PROFESSIONAL**

**QUALIFICATION:** Executive Masters in Project Management (CupE, UK)  
 Health, Safety and Environment Professional (NISP)  
 Member, International Association of Bridge and Structural Engineers (IABSE)  
 Member, National Society of Engineers (NSE)

**EXPERIENCE RECORD:** Mr. Olaniyan was a Trainee Engineer with Costain (WA) Plc, where he joined the team of engineers responsible for the construction of a twin seven (7) storey luxurious residential apartment at Milverton, Ikoyi. He later gained further experience when he worked with Brass Engineering and Construction Limited on the dualization of Enugu-Ogoja road. He headed the drainage construction team on that project.

He later joined Dauphin Concepts Limited, where as a structural/project coordinator, he was responsible for the design and supervision of the following projects:-

- Proposed Training/conference centre for Nigerian Breweries, Iganmu, Lagos.
- Structural design, erection and supervision of steel portal frame at abattoir, Agege.
- Proposed Federal Medical Centre for University of Nigeria, Nsukka, Enugu.
- Structural design of 2 storey showroom and relaxation centre , Itire road, Surulere.

**Languages:**

English  
 Yoruba

**Spoken:**

Excellent  
 Excellent

**Written:**

Excellent  
 Excellent

**Reading:**

Excellent  
 Excellent

**CURRICULUM VITAE**

**NAME:** AYOADE, Olusegun  
**PROFESSION:** Architect  
**NATIONALITY:** Nigerian  
**POSITION:** Partner,  
**KEY DATA:** Mr Ayoade is responsible for the construction and supervision of various building and civil works. He has been involved in several numbers of projects such as numerous Residential, Commercial and Industrial engineering project.

**EDUCATIONAL**

**QUALIFICATION:** HND Architecture  
Yaba College Of Technology, Lagos State.

**PROFESSIONAL**

Certified Project Management Professional (PMP) by PMI, UK  
Health, Safety and Environment Professional (NISP)  
Member Nigerian Institute of Architects NIA

**QUALIFICATION**

**EXPERIENCE RECORD:** Mr Ayoade started his career as a Architect with pyramid bond ltd where

He join team of Architect that designs and consult on the New Lagos state house of assembly and new Honorable office complex Alausa and some residential development.

He later joined Anetor & associate also as Architect and he was responsible for the overall project Designs and project implementation and coordination of contractors on behalf of the consulting firm in the construction works for New innovative and contemporary designs and construction of modern banks Guaranty Trust Plc and Diamond Bank

He later joined L.A STRUCON as Partner and project architect he was responsible for the Project implementation and monitoring of the following projects:-

- Design of Lagos state security trust fund police kiosk.
- Design and construction of Hotel for K&G oregun.
- Execution of civil works for Exxon Mobil Court, VI, Lagos.
- Construction of trailer terminals for Swift Oil, Apapa
- Construction and Design Forte Oil Filling station and shopping mall for HRM Oba Oniru, Lekki Phase 1.

**CURRICULUM VITAE**

**NAME:** SHUAIB, Ibrahim  
**PROFESSION:** Dogo Civil/Structural Engineer  
**NATIONALITY:** Nigerian  
**POSITION:** Senior Engineer  
**KEY DATA:** Engr. Shuaib is responsible for the design and supervision of various building and foundation works especially substation foundation works. He is a seasoned engineer with vast experience in structural design and supervision of transmission and substation foundation works.

**EDUCATIONAL**

**QUALIFICATION:** B.Eng (Hons) Civil Engineering  
 University Of Ilorin, Kwara State.

**PROFESSIONAL**

**AFILIATION:** Member, Council for the Regulation of Engineers of Nigeria (COREN) Member, Nigerian Society of Engineers.

**EXPERIENCE RECORD:** Engr. Shuaib was a trainee Engineer with Yolas Consultants Engineer and

Planners, where he joined the team of engineers responsible for several structural and civil works designs. He later gained further experience when he joined RG and EKSJ Construction Limited as a Site Engineer on the renovation of CBN, Maduguri Branch. Afterwards, he joined Adijj International Nigeria Limited as a site engineer and he was involved in the construction of Basin-Sango road, Ilorin.

He later joined Jiyoda Engineering Nigeria Limited, as a civil/structural Engineer, where he was carried out the following duties:-

- Review of buildings and foundation designs
- Structural design and supervision of substation foundation works
- Project Evaluation
- Supervision of construction of Omotosho -Epe -Ajah 330KV DC

transmission  
line.

<b>Languages:</b>	<b>Spoken:</b>	<b>Written:</b>	<b>Reading:</b>
English	Excellent	Excellent	Excellent
Yoruba	Excellent	Excellent	Excellent

**CURRICULUM VITAE**

**NAME:** GANIYU, Waheed Olaide  
**PROFESSION:** Civil/Structural Engineer  
**NATIONALITY:** Nigerian  
**POSITION:** Project Engineer  
**KEY DATA:** Mr Ganiyu is responsible for the design and supervision of various residential, commercial, religious and institutional structures both in concrete and steel structures.

**EDUCATIONAL**

**QUALIFICATION:** HND, Building Technology  
 The Federal Polytechnic, Ado-Ekiti, Ekiti State

**PROFESSIONAL**

**QUALIFICATION:** Project Management certification (Aset Nigeria)

**EXPERIENCE RECORD:** Mr Ganiyu was a Trainee Engineer with Dauphin Concepts Limited, where he joined the team of engineers responsible for several designs and supervision in Lagos and its environs. He later joined L.A STRUCON, during his NYSC, where he gained some experience in structural drawings of so many structural developments in Lagos.

He later rejoined L.A STRUCON after his NYSC and has been responsible for the structural design and supervision of the following projects:-

- Structural design and supervision of residential building at Lekki, Lagos.
- Structural design of the School development for RCCG, Garden of Peace, Surulere
- Steel dome for CAC church at Jakande Estate, Lagos
- Steel canopy for tipping station at Nestle, Agbara, Ogun State
- Steel trusses for the new electronics studio at CMD, Shangisha, Lagos
- Steel trusses for warehouse facility at trade fair complex, Lagos

<b>Languages:</b>	<b>Spoken:</b>	<b>Written:</b>	<b>Reading:</b>
English	Excellent	Excellent	Excellent
Yoruba	Excellent	Excellent	Excellent

**CURRICULUM VITAE**

**NAME:** OLURIN, Adedayo  
**PROFESSION:** Quantity Surveyor  
**NATIONALITY:** Nigerian  
**POSITION:** Project Quantity Surveyor  
**KEY DATA:** Mr Olurin Adedayo is responsible for the quantity surveying and project management of various residential, commercial, religious and institutional structures.

**EDUCATIONAL QUALIFICATION:** BSc. Quantity Surveying

**PROFESSIONAL QUALIFICATION:** Certified Project Management Professional (PMP) by PMI, USA  
Member, Nigerian Institution of Quantity Surveyors (NIQS)

**EXPERIENCE RECORD:** Mr Olurin was involved in the following projects:-

- Project Manager for the construction of a residential building at 13, Harold Shodipe GRA, Lagos.
- Project Manager for Karltech Engineering on the construction of 300 pile points (Pile Foundation) for a mixed development at 23, Commercial avenue yaba, Lagos.
- Construction Manager for the drainage construction works at Yaba, lagos.

<b>Languages:</b>	<b>Spoken:</b>	<b>Written:</b>	<b>Reading:</b>
English	Excellent	Excellent	Excellent
Yoruba	Excellent	Excellent	Excellent

**Name/Business Address**

**L.A STRUCON**

27, SABIU AJOSE STREET,  
OFF BODE THOMAS STREET,  
VIA STARCOMMS OFFICE,  
SURULERE, LAGOS,  
NIGERIA.

E-mail:- [l.a.strucon@gmail.com](mailto:l.a.strucon@gmail.com)

TEL: - 08060943825, 08121231615

**Our Bankers:**

UBA Plc

